

CRYSTALAUDIO

www.CrystalAudio.gr



#### DECLARATION OF CONFORMITY

Radio equipment and telecommunications terminal equipment, Directive 2014/35/EU

Crystal Audio hereby declares that the product, CASB160S Wireless Soundbar, is in conformity with provisions of the Directive 2014/35/EU. The complete text of the Declaration of conformity can be found on the following webpage: [www.CrystalAudio.gr](http://www.CrystalAudio.gr)

#### Warranty:

The product has 2-years warranty starting from the purchase date and is only valid with the proof of purchase (receipt or invoice). The warranty covers only the repair or replacement of the device and is effective only in Greece.

Damkalidis S.A. 44 Zefyrou str., P. Faliro, Greece

Designed in Europe by Crystal Audio-Assembled in China with the highest quality standards.



#### Bluetooth Connection

1. Turn on the soundbar and short-press the multi-function button to switch to BT mode
2. Activate the pairing function on your phone or other compatible device and select "CASB160S"
3. When successfully paired, you will hear a confirmation tone and the LED Display will stay on
4. The remote control includes BT mode playback controls

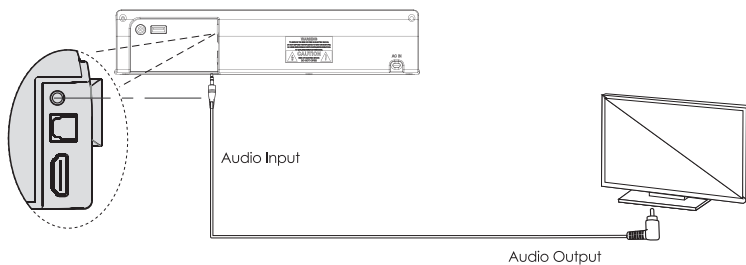
##### Notes:

- If your Paired device switches off or you disconnect it manually, the soundbar will re-enter pairing mode automatically
- The connection to the device will be re-established once you re-enter wireless range (10 meters). To connect other devices, disconnect the paired device and repeat the above pairing steps.
- There is no automatic shutdown in pairing mode. The soundbar will remain in pairing mode even if no device is paired, so switch it off if not in use!

#### AUX mode

- Connect the soundbar to your PC, tablet, smartphone, TV or other device using a 3.5mm audio cable. Short-press the multi-function button to switch to AUX input mode.
- In this mode, playback can only be controlled on your connected device

**Note:** For some computers, you may need to access the audio control panel to manually select the soundbar as the output speaker.



#### Playing Audio via USB

The soundbar automatically switches to USB input mode with the LED display (USB) when a USB flash drive is inserted (this mode isn't selectable on the soundbar or remote control unless a USB flash drive is connected).

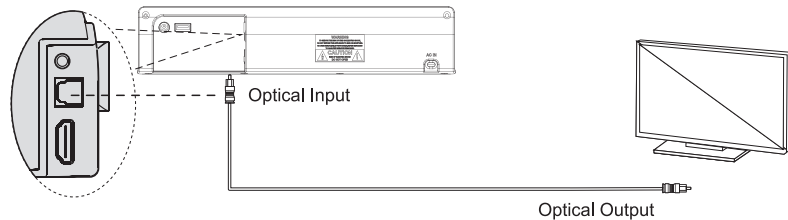
1. Ensure that your USB flash drive contains MP3 or WMA audio files (other file types are not supported).
2. Connect the USB flash drive to the USB port on the soundbar (or your own USB extension cable connected to the USB port); music will automatically start playing.
3. The remote control includes USB input mode playback controls.

#### Optical Mode

Use this operating mode to play audio using optical digital input (for example from a TV or PC) (A). The TV must have an optical digital output. Use an optical cable to make the connection.

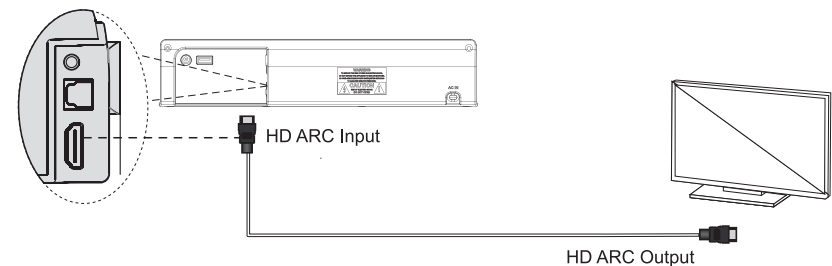
Proceed as follows:

- Connect the optical cable to the optical digital output of your TV.
- Then connect the optical cable to the optical digital input of your soundbar.
- Turn the TV and soundbar on. Set the connected TV to Audio output to Optical and "PCM Stereo" or "Stereo 2.0".
- Start playing on the TV.
- Switch to OPTICAL input mode on the soundbar using the remote control.
- You can use the volume buttons to adjust the volume to your requirements.
- If you wish, you can change the audio settings using the relevant buttons on the remote control



#### HD ARC Mode

1. The Soundbar supports HD ARC with Audio Return Channel (ARC). If your TV is HD ARC enabled, you can hear the TV audio through your Soundbar by using an HD ARC cable.
2. Using a High Speed HD ARC cable, connect the HD ARC connector on the soundbar to the HD ARC port on the TV. The HD ARC port on the TV should be labelled. For more information, see the TV user manual.



#### TROUBLESHOOTING

ISSUE	POSSIBLE CAUSE	SOLUTION
There is no sound output from soundbar.	Another input source is selected.	Select an appropriate input source.
	The mute function is activated.	Cancel the mute function.
	The volume of soundbar or TV/other device is adjusted too low.	Increase the volume level on soundbar or by remote control or on TV.
	The power cable of the unit is not connected properly.	Make sure that the power cable of the unit is connected to an AC wall outlet securely.
The sound is distorted or echoed.	TV volume is not muted.	If you play audio from TV through the soundbar, make sure that the TV is muted.
	The automatic volume adjustment function is activated. To prevent excessive loudness, the unit automatically controls its volume within a certain level when the unit is turned on.	Turn up the volume as required.
Noise is heard.	The soundbar is too close to another digital or high-frequency device.	Move those devices away from the soundbar.
The unit cannot be operated by using the remote control.	The unit is out of the operating range.	Use the remote control within the operating range.
	The batteries are weak.	Replace with new batteries.
The TV cannot be operated by using the TV's remote control.	The remote control sensor of the soundbar is exposed to direct sunlight or strong lighting.	Adjust the lighting angle or reposition the soundbar. Make sure our product cannot be used in sunlight.
	The unit is blocking the TV's remote control sensor.	Position the unit so that it does not obstruct the TV's remote control sensor.
A device cannot connect to the soundbar or the unit cannot be connected to a Bluetooth device.	Bluetooth function of the device is not activated, not paired or connected correctly.	Restart the soundbar and try pairing again. You have not enabled the Bluetooth function of the device; see the user manual of the device on how to enable the function and correctly connected the device. The soundbar is already connected with another Bluetooth device. Disconnect the connected device, and then try again.
	Bluetooth is not selected as the input source.	Select Bluetooth as the input source.
	The unit is connected to a different Bluetooth device.	Un-pair the Bluetooth device that is currently connected and pair with the desired Bluetooth device.
	The unit is too far away from the Bluetooth device.	Move the Bluetooth device closer to this unit.
	A device emitting electromagnetic waves (such as a microwave oven, a wireless device and so on) may be placed nearby.	Do not use this unit near devices that emit electromagnetic waves.
	The Bluetooth device that you are using may not support the protocol.	Use a Bluetooth device that supports the protocol.
Disconnected between subwoofer and soundbar	The connection profile registered in the Bluetooth device may not be functioning correctly for some reason.	Delete the connection profile in the Bluetooth device and then connect the Bluetooth device to this unit.

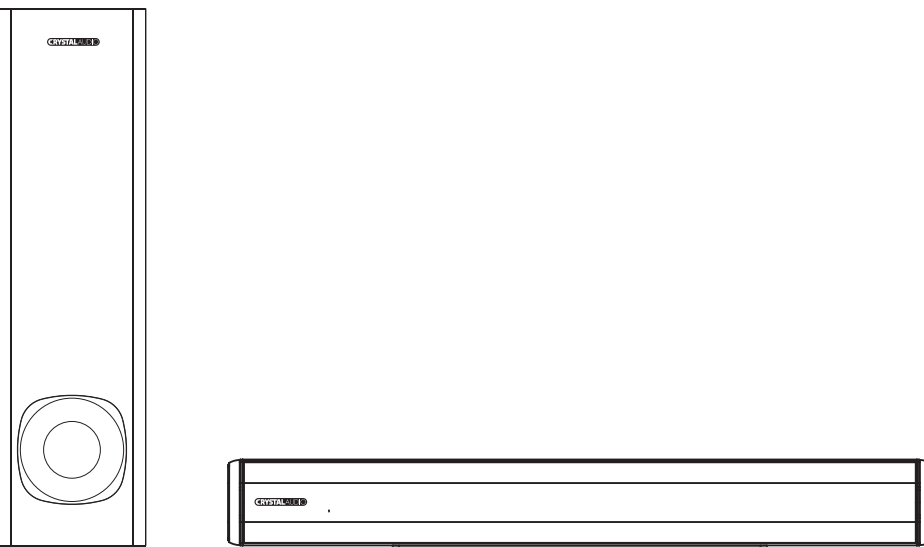
ISSUE	POSSIBLE CAUSE	SOLUTION
Sound quality of audio playback from a connected Bluetooth device is poor and connection is not stable.	The Bluetooth reception is poor.	Move the device closer to the soundbar, or remove any obstacle between the device and the soundbar.
No sound can be heard or sound breaks (Bluetooth mode)	The volume on the Bluetooth device may be too low.	Raise the volume on the Bluetooth device.
	Bluetooth is not selected as the input source.	Select the Bluetooth as the input source.
	Playback on the device has not been performed.	Perform playback on the device.
	The sound output on the Bluetooth device may not be set to this unit.	Select this unit as the output device on the Bluetooth device.
	The connection to the Bluetooth device was cut off.	Connect with the Bluetooth device one more time.
	The unit may be too far away from the Bluetooth device.	Move the Bluetooth device near this unit.
There is no sound from soundbar in HD ARC Mode	A device emitting electromagnetic waves (such as a microwave oven, a wireless device and so on) may be placed nearby.	Do not use this unit near device that emit electromagnetic waves.
	Incorrect HD ARC cable is used causing no signal to be sent to soundbar.	1. Make sure that the TV and soundbar are connected by a 19-core HD ARC cable. 2. The soundbar and TV are connected through HD ARC port output; make sure that the TV is ARC compliant. 3. Set the TV audio output to TV(ARC) (CEC). Set the audio output mode of TV to PCM format. (Or refer to your TV user manual)
There is no sound from sound bar (OPTICAL Mode)	Incorrect input mode is selected.	1. Replace the OPTICAL cable with a new one to connect. 2. Set your TV audio output to PCM format. (Pls refer to your TV user manual)
There is no sound from soundbar in USB mode	OPTICAL cable might be damaged and no signal is received by the soundbar due to a failed connection and incorrect operation mode selected.	1. Replace the OPTICAL cable with a new one to connect. 2. Set your TV audio output to PCM format. (Pls refer to your TV user manual)
There is no sound from subwoofer and soundbar	USB file type is not support & Soundbar doesn't switch to USB input mode automatically when USB is inserted.	Make sure that USB flash drive contains MP3 files because other file types are not supported. Switch the input mode once again, then playback again.
	Connection is not correct between subwoofer and soundbar	1. Turn off the soundbar and subwoofer by removing the AC plug from the socket. 2. Make sure that the soundbar and subwoofer are connected to the power outlet at the same time, and switch on soundbar and subwoofer again. 3. Press and hold the subwoofer's rear plate WPS button to reset the connection, so that the soundbar and subwoofer can be reconnected again.

CRYSTALAUDIO

User Manual

## Bluetooth® COMPACT SOUNDBAR with Powerful Active Subwoofer

CASB160S



A OPSI CASB160S A5(148x210mm kleisto) 888x210mm Anoixto

## Important Safety Instruction

Thank you for purchasing the CASB160S Soundbar. Please read this user manual carefully and keep for future reference.

### Warning



### Caution:

To reduce the risk of electric shock, do not dismantle the product and do not expose the apparatus to rain or moisture. No user-serviceable parts inside. Refer servicing to qualified personnel only.



The lightning flash within an equilateral triangle is intended to alert you to the presence of uninsulated dangerous voltage within the product's enclosure that may be of sufficient magnitude to constitute an electric shock to a person or persons.



Important! This symbol alerts you to read and observe important warnings and instructions on the unit or in this manual.

### Notice:

This appliance is not intended for use by persons (including children) with reduced physical sensory or mental capabilities, or lack of experience and knowledge, unless they have been given supervision or instruction concerning use of the appliance by a person responsible for their safety. Children should be supervised to ensure that they do not play with the appliance.



- To prevent possible hearing damage, do not listen at high volume levels for long time periods or suddenly.
- Never use the device unsupervised! Switch off the device whenever you are not using it, even if not using it only for a short while.
- The appliance is not intended to be operated by means of an external timer or separate remote control system.
- If the supply cord is damaged, it must be replaced by the manufacturer, its service agent or similarly qualified persons in order to avoid a hazard.
- Before operating this system, check the voltage of this system to see if it is identical to the voltage of your local power supply.
- The unit should not be impeded by covering the ventilation opening with items such as newspaper, table-cloths, curtains etc. Make sure that there are at least 20 cm of space above and at least 5 cm of space on each side of the unit.
- The apparatus must not be exposed to dripping or splashing and that objects filled with liquids, such as vases, must not be placed on the apparatus.
- To prevent fire or shock hazard, do not expose this equipment to direct heat, rain, moisture or dust.

1

- Do not place this unit near any water sources e.g. taps, bathtubs, washing machines or swimming pools. Ensure that you place the unit on a dry, stable surface.
- Do not place this unit close to a strong magnetic field.
- Do not place the unit on an amplifier or receiver.
- Do not place this unit in a damp area as the moisture will affect the life of electric components.
- Do not attempt to clean the unit with chemical solvents as this might damage the finish. Wipe with a clean, dry or slightly damp cloth.
- When removing the power plug from the wall outlet, always pull directly on the plug, never pull on the cord.
- Depending on the electromagnetic waves used by a television broadcast, if a TV is turned on near this unit while it is also on, lines might appear on the LED TV. Neither this unit nor the TV is malfunctioning. If you see such lines, keep this unit well away from the TV set.
- The mains plug is used to disconnect the device, the disconnected device should remain readily operable.
- Read these instructions. Keep these instructions. Follow all instructions. Heed all warnings.
- This soundbar was especially developed for LED/LCD/Plasma TV's and PCs: It should not be used in combination with CRT TV's (Cathode Ray Tube TV's) in order to avoid image interference.
- For safety reasons, do not remove any covers or attempt to gain access to the inside of the product. Refer any servicing to qualified personnel. Servicing is required when the apparatus has been damaged in any way, for example, when the power-supply cord or plug is damaged, liquid has been spilled or objects have fallen into the apparatus, the apparatus has been exposed to rain or moisture, does not operate normally, or has been dropped.
- Unplug this apparatus during lightning storms or when unused for long periods of time. In order to disconnect the apparatus from the AC power completely, the AC plug must be removed from the AC outlet completely.

## Preparation for Use

### Unboxing and Set Up

- Remove the Soundbar from the carton and remove all packing material from the Soundbar. Save the packing material, if possible, in case the Soundbar ever needs to be serviced or transported. The original carton and packing material is the only safe way to pack your Soundbar to protect it from damage in transit.
- Remove any descriptive labels or stickers on the front or top of the cabinet. Do not remove any labels or stickers from the back or bottom of the cabinet.
- Place your Soundbar on a level surface such as a table, desk or shelf, convenient to an AC outlet, out of direct sunlight, and away from sources of excess heat, dirt, dust, moisture, humidity, or vibration.
- Unwind the Power cord connecting the AC adapter and extend it to its full length.

### Protect Your Furniture

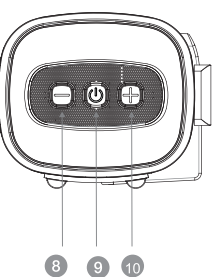
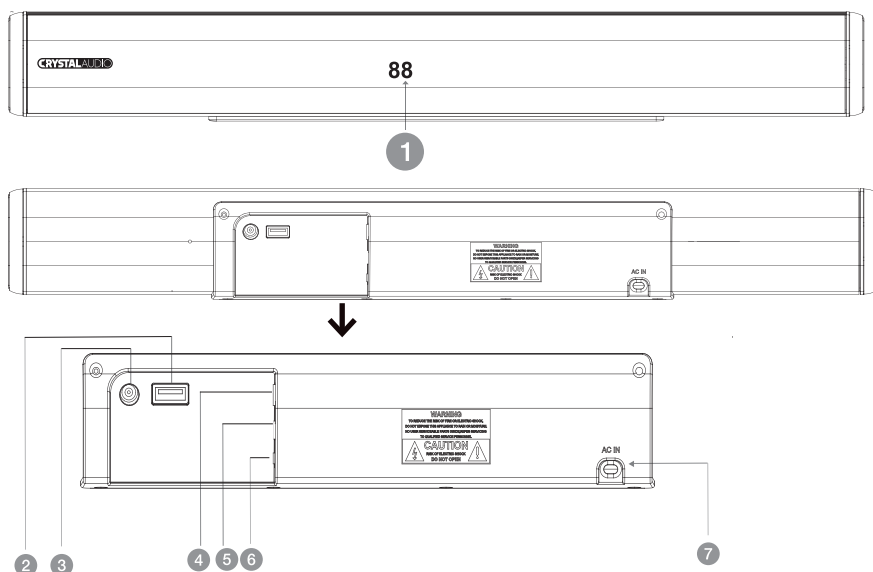
This model is equipped with non-skid rubber 'feet' to prevent the product from moving when you operate the controls. These 'feet' are made from non-migrating rubber material specially formulated to avoid leaving any marks or stains on your furniture. However certain types of oil based furniture polishes, wood preservatives, or cleaning sprays may cause the rubber 'feet' to soften, and leave marks or a rubber residue on the furniture. To prevent any damage to your furniture we strongly recommend that you purchase small self-adhesive felt pads, available at hardware stores and home improvement center everywhere, and apply these pads to the bottom of the rubber 'feet' before you place the unit.

### Power Source

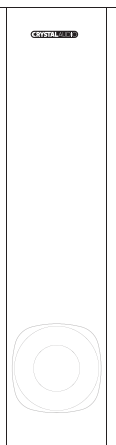
This soundbar is designed to operate on normal AC Power source. For Europe, it works only under SMPS 110V-240V~50hz/60Hz. Do not attempt to operate the Soundbar on any other power source. You could cause damage to the Soundbar that is not covered by your warranty.

2

## Product Diagram

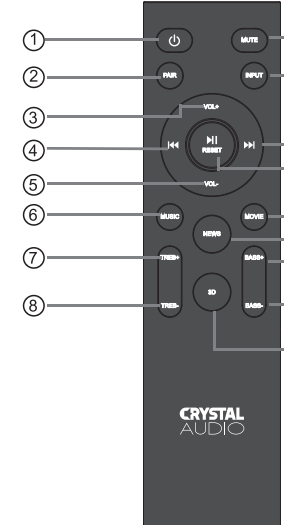


- LED display
- USB
- Subwoofer OUT
- AUX
- OPTICAL
- HD ARC
- AC IN
- VOL-
- Power/Standby
- VOL+



3

## Remote Control

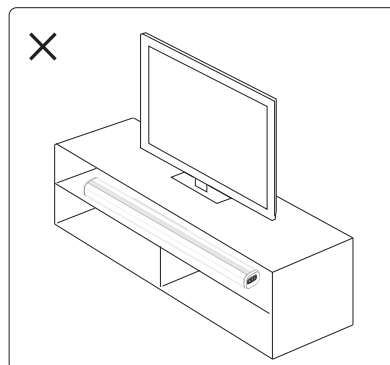
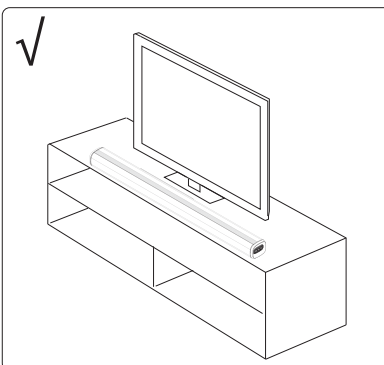


- Standby mode for power on/off.
- PAIR: Connect or disconnect to the pairing device. (Press the button for more than 2 seconds).
- Volume+: Master volume up
- M4: Pre button: Previous program (Only works under USB & BT mode)
- Volume -: Master volume down
- MUSIC: Select the Music EQ effect.
- TR+: Treble volume UP.
- TR-: Treble volume down.
- MUTE: Mute mode.
- INPUT: Input mode (AUX/USB/HD ARC/OPT/BT).
- Next button: Next program (Only works under USB & BT mode). Reset: Press and hold the button for more than 2 sec. to set all functions to manufacturer defaults.
- MOVIE: Select the Movie EQ effect.
- NEWS: Select the News EQ effect.
- Bass+: To increase the bass. (Refer to Bass chapter for reference.)
- Bass -: To decrease the bass. (Refer to Bass chapter for reference.)
- 3D: Select the 3D EQ effect.

## Positioning the Sound Bar

### Place on a flat Surface

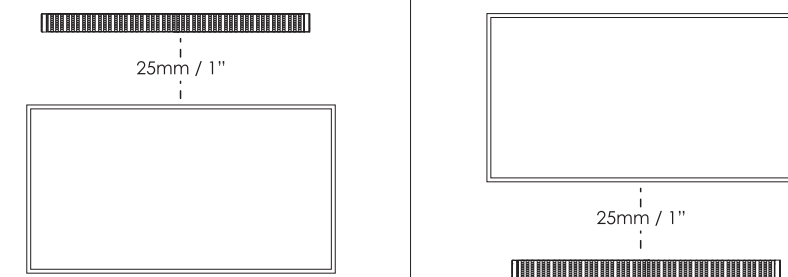
Place the soundbar horizontally on a flat surface such as a TV unit or shelves and align it centrally with the TV screen. Allow some space between the speaker and the wall. Don't place inside a cabinet or a walled shelf. Follow this guidance for best sound output and good airflow around the soundbar.



4

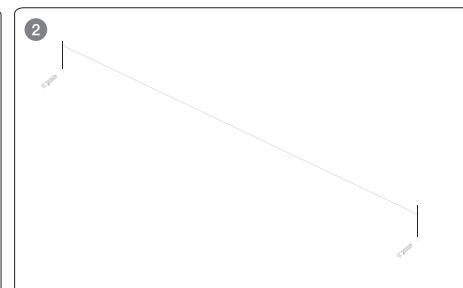
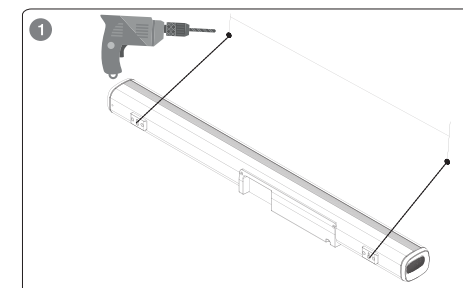
## Mount on the wall

**WARNING:** If you don't feel confident to correctly and securely wall-mount the soundbar, seek the assistance of an experienced person or professional. Install the speaker on a vertical, fast, reinforced area of wall. For plaster walls, it is recommended to screw into wall studs for greater security. For optimum performance, allow at least 25mm/1" distance between the soundbar and the TV.

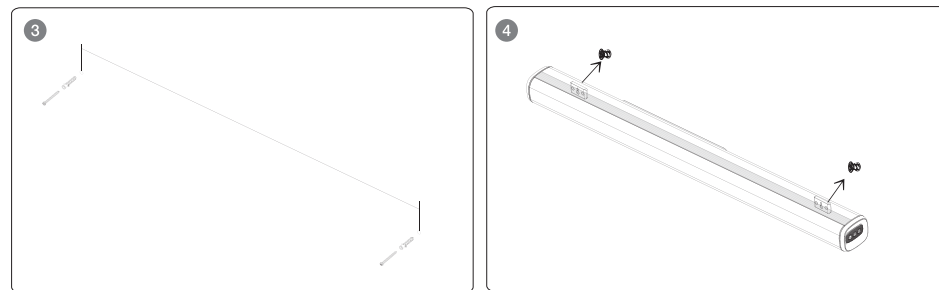


## Follow below steps to mount the sound bar on the wall

- Make 2 holes on the wall with distance same as the wall bracket on the soundbar.
- Put the plastic anchors onto the wall and secure the screws to the plastic clip, do not tighten the screws all the way and make sure to leave some space.
- Once the screws are securely fastened, hang the soundbar over by inserting the screws onto the wall mount bracket.



5



## OPERATION INSTRUCTIONS

### Auto Standby & Energy Saving

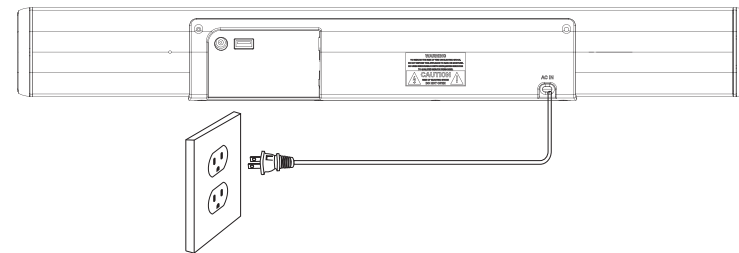
- The unit will automatically turn to standby mode when no audio input is received for 20 minutes. The soundbar will wake up from standby mode when any button is pressed or source input is received.
- Please turn the unit off completely to save energy when not in use.
- To switch the unit off completely, remove the mains plug from the mains socket.

### Set-up

- Plug in the power cord and the display will light up (Standby mode)
- Switch on the soundbar by using the power button on the soundbar or by using the STANDBY button on the remote. After switching it on, the default input mode will appear on display.
- Input mode can be changed by the power button on the unit or by using the INPUT button on the remote
- Below are the input mode names appearing on the soundbar display:  
BT -Bluetooth Pairing mode, AU-AUX mode, OP -Optical mode, HD -HD ARC mode, US-USB mode.

### Powering On/Off

- Plug the soundbar into a wall outlet, it will automatically enter standby mode
- Short-press the multi-function button to turn on the soundbar
- To turn off, press the STANDBY button on the remote control or unplug from the wall outlet.



6

B OPSI CASB160S A5(148x210mm kleisto) 888x210mm Anoixto